

# The SPACE Art Gallery

welcomes

## Chuck Kelton

### *Dipped In Gold*

“You are an alchemist; make gold of that” - William Shakespeare.

**Chuck Kelton, Artist, Master Printer, Educator, and photographic visionary has done just that.**

Using only traditional black and white photographic chemicals and traditional light sensitive photographic paper, Kelton creates vivid landscapes that dance with movement. The result is a version of reality that evokes both chaos and stability and adds the additional comfort of this world having been Dipped In Gold.

Kelton's chemigrams and photograms are the continuation of a half century of photographic explorations that started with his first camera click at the age of 13. Completing his MFA at Ohio University, in a program that focused not only on the development and creation of visual projects but an intensive study of the photographic materials themselves. Kelton was on a journey, not only to create his own works of art but to become a Master Printer in the commercial and artistic world of photographic printing. This selection of work has its foundations in his early visits to Bear Mountain, outside of New York City. It was there that Kelton first experimented by holding photographic paper against a tree and allowing the light to directly expose the paper. The result was a magical expression of negative space that blurred the reality of what was present and what is imagined.



© Chuck Kelton, Moonrise on Golden Pond 19.75" x 23.75"  
Unique chemigram and photogram. Signed on verso.



# The SPACE Art Gallery

## 1. Moonrise on Golden Pond by Chuck Kelton \$5,500.00

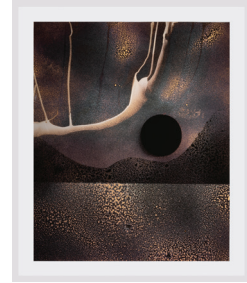
Unique chemigram and photogram on oxidized Ilford FB Warmtone silver gelatin paper.

Gold Chloride and Iron toners applied by hand.

Image size 19.75" x 23.75" museum hinge mounted and framed under museum glass.

Frame size 23.5" x 27.25"

Signed and Dated on Verso



## 2. Mountain Moonrise by Chuck Kelton \$5,500.00

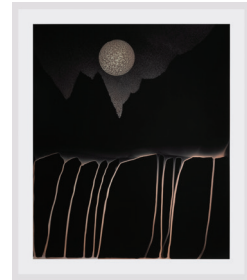
Unique chemigram and photogram on oxidized Ilford FB Warmtone silver gelatin paper.

Gold Chloride and Iron toners applied by hand.

Image size 19.75" x 23.75" museum hinge mounted and framed under museum glass.

Frame size 23.5" x 27.25"

Signed and Dated on Verso



## 3. Moonrise, Seascape #3 by Chuck Kelton \$5,500.00

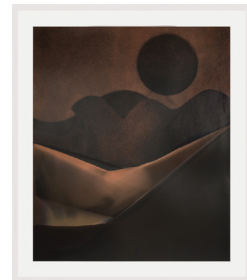
Unique chemigram and photogram on oxidized Ilford FB Warmtone silver gelatin paper.

Gold Chloride and Iron toners applied by hand.

Image size 19.75" x 23.75" museum hinge mounted and framed under museum glass.

Frame size 23.5" x 27.25"

Signed and Dated on Verso



## 4. Moonrise, Seascape #12 by Chuck Kelton \$5,500.00

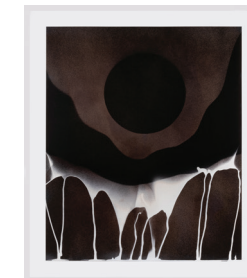
Unique chemigram and photogram on oxidized Ilford FB Warmtone silver gelatin paper.

Gold Chloride and Iron toners applied by hand.

Image size 19.75" x 23.75" museum hinge mounted and framed under museum glass.

Frame size 23.5" x 27.25"

Signed and Dated on Verso



## 5. Moonrise #47 by Chuck Kelton \$5,500.00

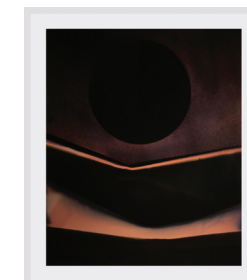
Unique chemigram and photogram on oxidized Ilford FB Warmtone silver gelatin paper.

Gold Chloride and Iron toners applied by hand.

Image size 19.75" x 23.75" museum hinge mounted and framed under museum glass.

Frame size 23.5" x 27.25"

Signed and Dated on Verso



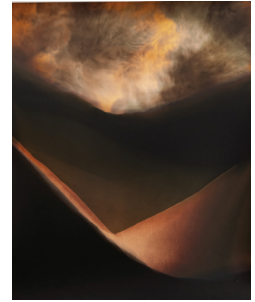
## The SPACE Art Gallery

### 6. Thoughts on Mountains and Valleys by Chuck Kelton \$2,800.00

Pigment print on archival paper mounted to acrylic.  
Reproduction of unique chemigram of the same name.

1st Edition  
Image size 30" x 40"

Signed and Dated on Verso



### 7. Thoughts on Mountains and Valleys #93 by Chuck Kelton \$4,500.00

Unique chemigram on oxidized Foma silver gelatin paper.  
Gold Chloride and Iron toners applied by hand.  
Image size 15.75" x 19.825" museum hinge mounted and framed under museum glass.  
Frame size 19.5" x 23.5"

Signed and Dated on Verso



### 8. Thoughts on Mountains and Valleys #88 by Chuck Kelton \$4,500.00

Unique chemigram on oxidized Foma silver gelatin paper.  
Gold Chloride and Iron toners applied by hand.  
Image size 15.75" x 19.825" museum hinge mounted and framed under museum glass.  
Frame size 19.5" x 23.5"

Signed and Dated on Verso



### 9. Thoughts on Mountains and Valleys #103 by Chuck Kelton \$4,500.00

Unique chemigram on oxidized Foma silver gelatin paper.  
Gold Chloride and Iron toners applied by hand.  
Image size 15.75" x 19.825" museum hinge mounted and framed under museum glass.  
Frame size 19.5" x 23.5"

Signed and Dated on Verso



### 10. Thoughts on Mountains and Valleys #87 by Chuck Kelton \$4,500.00

Unique chemigram on oxidized Foma silver gelatin paper.  
Gold Chloride and Iron toners applied by hand.  
Image size 15.75" x 19.825" museum hinge mounted and framed under museum glass.  
Frame size 19.5" x 23.5"

Signed and Dated on Verso



## The SPACE Art Gallery

In 1979 Kelton moved back to New York City and opened Kelton Labs. This was a “high end” black and white photographic lab that specialized in both commercial and fine exhibition printing. Kelton’s talent and unparalleled abilities gave him access to some of the most famous photographers of this era: Danny Lyon, Louis Faurer, Mary Ellen Mark, Saul Leiter, Steven Meisel, Lillian Bassman, Helen Levitt to name a few. He had become a trusted name in the business and was sought after to print posthumously the negatives of Alfred Eisenstadt, Robert Capa, and Ansel Adams. Even today he is entrusted with images the rest of us only see in books.

Kelton never stopped exploring his personal vision of cameraless photography. He works inside and outside his darkroom transforming light, chemicals, precious metals, and photographic paper into rich landscapes that sit on the very edge of abstraction. While the first permanent photograph is attributed to Nicéphore Niepce, William Fox Talbot was concurrently experimenting with photograms. Over the next two and half centuries the photographic process continued to develop this is where Kelton picks up the baton. Building on the work he began in Bear Mountain he absorbed all this technique and process as though he was the silver on the paper.

A photogram is made by exposing photosensitive paper to light; a chemigram is created by exposing light sensitive paper to chemicals. In Kelton’s work you see the nods to great manipulators of the process, alchemists, artists, and scientists: Pierre Cordier, Talbot, Le Gray, Man Ray, and Moholy-Nagy. His work is alive, infused with the history of photography, creating a new visual ideology. He frequently combines techniques in a single image. Selecting tools, as a master would, using chance, chemistry, oxidized paper, and liquified metals, Kelton performs, allowing these works to emerge from his imagination into spectacular images of something we may have seen. The oxidized paper becomes the canvas. The works can take months to create, culminating with the appearance of richly detailed textures, linear shapes, or spheres of heavenly bodies. These works have the luminosity of traditional photography, with the physical and optical complexity of Leonardo’s legendary and mysterious landscapes.

The SPACE Art Gallery

[www.thespacephiladelphia.com](http://www.thespacephiladelphia.com)



# The SPACE Art Gallery

## 11. Blue Moon #77 by Chuck Kelton

**\$4,500.00**

Unique chemigram and photogram on oxidized Ilford FB Warmtone silver gelatin paper.  
Gold Chloride and Iron toners applied by hand.  
Image size 15.75" x 19.825" museum hinge mounted and framed under museum glass.  
Frame size 19.5" x 23.5"

Signed and Dated on Verso

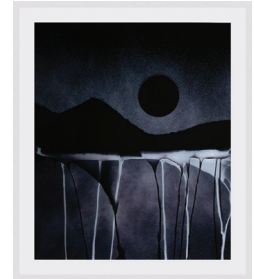


## 12. Blue Moon #5 by Chuck Kelton

**\$5,500.00**

Unique chemigram and photogram on oxidized Ilford FB Warmtone silver gelatin paper.  
Gold Chloride and Iron toners applied by hand.  
Image size 19.75" x 23.75" museum hinge mounted and framed under museum glass.  
Frame size 23.5" x 27.25"

Signed and Dated on Verso

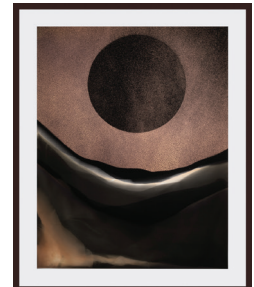


## 13. Moonrise #63 by Chuck Kelton

**\$4,500.00**

Unique chemigram and photogram on oxidized Ilford FB Warmtone silver gelatin paper.  
Gold Chloride and Iron toners applied by hand.  
Image size 15.75" x 19.825" museum hinge mounted and framed under museum glass.  
Frame size 19.5" x 23.5"

Signed and Dated on Verso



## The SPACE Art Gallery

Moonrise #108 by Chuck Kelton, 2021 **\$5,000.00**

Unique chemigram and photogram on oxidized Ilford FB Warmtone silver gelatin paper.

Gold Chloride and Iron toners applied by hand.

Image size 19.75" x 23.75"

Signed and Dated on Verso



A New Moon by Chuck Kelton, 2021 **\$5,000.00**

Unique chemigram and photogram on oxidized Ilford FB Warmtone silver gelatin paper.

Gold Chloride and Iron toners applied by hand.

Image size 19.75" x 23.75"

Signed and Dated on Verso



Kelton's work invites us into a romantic world, delicate and highly composed. A world composed of inky tones, black, reds, mottled bronze, deep blues, flares, and swirling shapes creating compositions that approach a reality and quickly slip past into a vision of a profound unique sensibility.

Moonrise with fold by Chuck Kelton, 2021 **\$5,000.00**

Unique chemigram and photogram on oxidized Ilford FB Warmtone silver gelatin paper.

Gold Chloride and Iron toners applied by hand.

Image size 19.75" x 23.75"

Signed and Dated on Verso



A New Moon by Chuck Kelton, 2021 **\$5,000.00**

Unique chemigram and photogram on oxidized Ilford FB Warmtone silver gelatin paper.

Gold Chloride and Iron toners applied by hand.

Image size 19.75" x 23.75"

Signed and Dated on Verso



# The SPACE Art Gallery

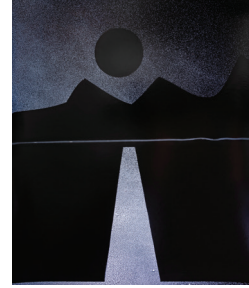
## Moonrise with fold by Chuck Kelton, 2022 **\$5,000.00**

Unique chemigram and photogram on oxidized Ilford FB Warmtone silver gelatin paper.

Gold Chloride and Iron toners applied by hand.

Image size 19.75" x 23.75"

Signed and Dated on Verso



## Moonrise by Chuck Kelton, 2021 **\$5,000.00**

Unique chemigram and photogram on oxidized Ilford FB Warmtone silver gelatin paper.

Gold Chloride and Iron toners applied by hand.

Image size 19.75" x 23.75"

Signed and Dated on Verso



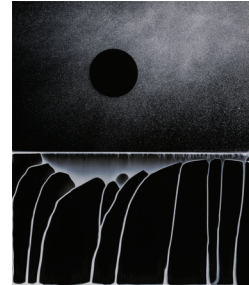
## Moonrise #63 by Chuck Kelton, 2021 **\$5,000.00**

Unique chemigram and photogram on oxidized Ilford FB Warmtone silver gelatin paper.

Gold Chloride and Iron toners applied by hand.

Image size 19.75" x 23.75"

Signed and Dated on Verso



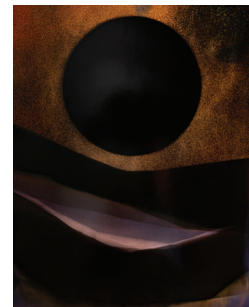
## Moonrise by Chuck Kelton, 2021 **\$4,000.00**

Unique chemigram and photogram on oxidized Ilford FB Warmtone silver gelatin paper.

Gold Chloride and Iron toners applied by hand.

Image size 18" x 22"

Signed and Dated on Verso



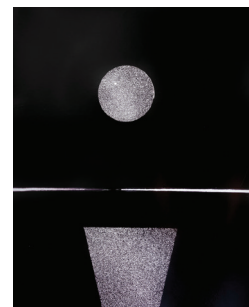
## Moonrise with fold by Chuck Kelton, 2021 **\$4,000.00**

Unique chemigram and photogram on oxidized Ilford FB Warmtone silver gelatin paper.

Gold Chloride and Iron toners applied by hand.

Image size 15.75" x 19.825"

Signed and Dated on Verso



## The SPACE Art Gallery

Picture of a World #14 by Chuck Kelton, 2015

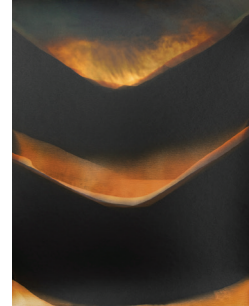
**\$4,000.00**

Unique chemigram on oxidized Foma silver gelatin paper.

Gold Chloride and Iron toners applied by hand.

Image size 15.75" x 19.825"

Signed and Dated on Verso



Picture of a World by Chuck Kelton , 2019

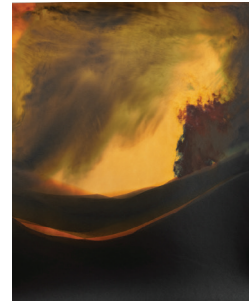
**\$4,000.00**

Unique chemigram on oxidized Foma silver gelatin paper.

Gold Chloride and Iron toners applied by hand.

Image size 15.75" x 19.825"

Signed and Dated on Verso



Picture of a World by Chuck Kelton, 2016

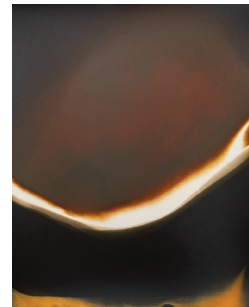
**\$4,000.00**

Unique chemigram on oxidized Foma silver gelatin paper.

Gold Chloride and Iron toners applied by hand.

Image size 15.75" x 19.825"

Signed and Dated on Verso



Picture of a World by Chuck Kelton, 2016

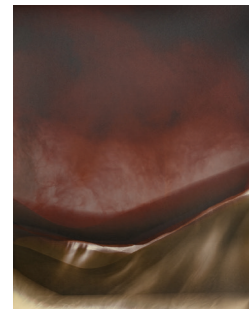
**\$4,000.00**

Unique chemigram on oxidized Foma silver gelatin paper.

Gold Chloride and Iron toners applied by hand.

Image size 15.75" x 19.825"

Signed and Dated on Verso



Picture of a World by Chuck Kelton, 2017

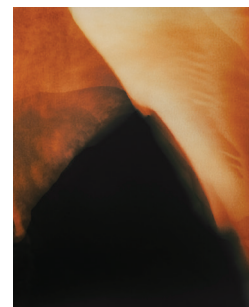
**\$4,000.00**

Unique chemigram on oxidized Foma silver gelatin paper.

Gold Chloride and Iron toners applied by hand.

Image size 15.75" x 19.825"

Signed and Dated on Verso





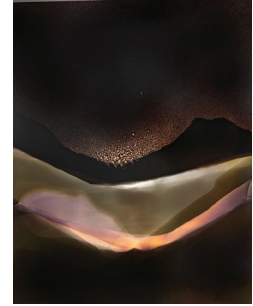
## The SPACE Art Gallery

Picture of a World by Chuck Kelton, 2020

\$4,000.00

Unique chemigram on oxidized Foma silver gelatin paper.  
Gold Chloride and Iron toners applied by hand.  
Image size 15.75" x 19.825"

Signed and Dated on Verso



Quietlands #12 by Chuck Kelton, 2016

\$4,000.00

Unique chemigram on oxidized Foma silver gelatin paper.  
Gold Chloride and Iron toners applied by hand.  
Image size 15.75" x 19.825"

Signed and Dated on Verso



Quietlands #15 by Chuck Kelton, 2016

\$4,000.00

Unique chemigram on oxidized Foma silver gelatin paper.  
Gold Chloride and Iron toners applied by hand.  
Image size 15.75" x 19.825"

Signed and Dated on Verso



Quietlands #21 by Chuck Kelton, 2016

\$4,000.00

Unique chemigram on oxidized Foma silver gelatin paper.  
Gold Chloride and Iron toners applied by hand.  
Image size 15.75" x 19.825"

Signed and Dated on Verso



As art history examines the photographic process, there is no doubt that Kelton's name will designate the next leap forward. From his seminal series *View Not from A Window* to the selected works in this exhibition *Dipped in Gold*, his work is synonymous with cameraless photography. Kelton's works have been exhibited around the world. He is in numerous collections, including The Getty Museum, The Museum of Fine Arts Boston, Nelson-Atkins, Bibliothèque Nationale de France, and The Morgan Library, to name a few.

The SPACE Art Gallery  
[www.thespacephiladelphia.com](http://www.thespacephiladelphia.com)

## The SPACE Art Gallery

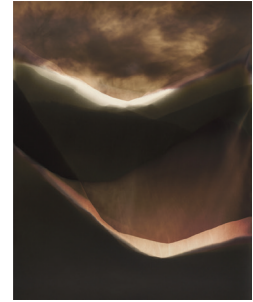
Thoughts on Mountains and Valleys by Chuck Kelton, 2015 **\$4,000.00**

Unique chemigram on oxidized Foma silver gelatin paper.

Gold Chloride and Iron toners applied by hand.

Image size 15.75" x 19.825"

Signed and Dated on Verso



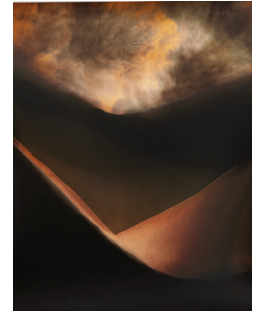
Thoughts on Mountains and Valleys by Chuck Kelton, 2016 **\$4,000.00**

Unique chemigram on oxidized Foma silver gelatin paper.

Gold Chloride and Iron toners applied by hand.

Image size 15.75" x 19.825"

Signed and Dated on Verso



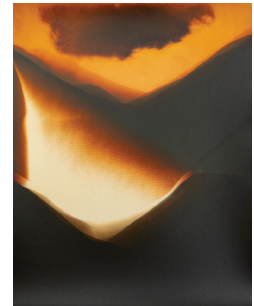
Thoughts on Mountains and Valleys by Chuck Kelton, 2016 **\$4,000.00**

Unique chemigram on oxidized Foma silver gelatin paper.

Gold Chloride and Iron toners applied by hand.

Image size 15.75" x 19.825"

Signed and Dated on Verso



Thoughts on Mountains and Valleys by Chuck Kelton, 2016 **\$4,000.00**

Unique chemigram on oxidized Foma silver gelatin paper.

Gold Chloride and Iron toners applied by hand.

Image size 15.75" x 19.825"

Signed and Dated on Verso



# The SPACE Art Gallery

## Silkscreen prints



Eclipsed #2 **\$650.00**  
by Chuck Kelton, 2020  
Silkscreen print 21.25" x 25.25"  
image size 18" x 21.75"  
Unique  
Signed and dated on recto



Eclipsed #3 **\$650.00**  
by Chuck Kelton, 2020  
Silkscreen print 21.25" x 25.25"  
image size 18" x 21.75"  
Unique  
Signed and dated on recto



Eclipsed #4 **\$650.00**  
by Chuck Kelton, 2020  
Silkscreen print 21.25" x 25.25"  
image size 18" x 21.75"  
Unique  
Signed and dated on recto



Eclipsed #5 **\$650.00**  
by Chuck Kelton, 2020  
Silkscreen print 21.25" x 25.25"  
image size 18" x 21.75"  
Unique  
Signed and dated on recto



Eclipsed #6 **\$650.00**  
by Chuck Kelton, 2020  
Silkscreen print 21.25" x 25.25"  
image size 18" x 21.75"  
Unique  
Signed and dated on recto



Eclipsed #7 **\$650.00**  
by Chuck Kelton, 2020  
Silkscreen print 21.25" x 25.25"  
image size 18" x 21.75"  
Unique  
Signed and dated on recto



Eclipsed #8 **\$650.00**  
by Chuck Kelton, 2020  
Silkscreen print 21.25" x 25.25"  
image size 18" x 21.75"  
Unique  
Signed and dated on recto

# The SPACE Art Gallery

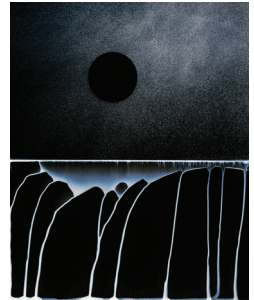
Moonrise #63 print by Chuck Kelton, 2022

**\$450.00**

Pigment Print on Archival FB satin paper  
Reproduction of unique chemigram and photogram of the same name.  
Edition of 10

Image size 16" x 20"

Signed and Dated on Verso



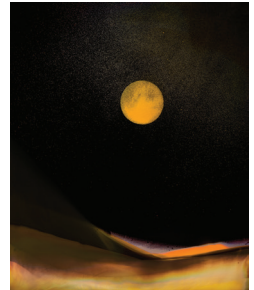
Moonrise #108 print by Chuck Kelton, 2022

**\$750.00**

Pigment Print on Archival FB satin paper  
Reproduction of unique chemigram and photogram of the same name.  
Edition of 10

Image size 20" x 24"

Signed and Dated on Verso

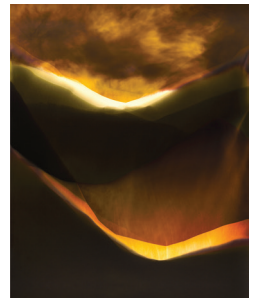


Thoughts on Mountains and Valleys print by Chuck Kelton, 2022 **\$450.00**

Pigment Print on Archival FB satin paper  
Reproduction of unique chemigram of the same name.  
Edition of 10

Image size 16" x 20"

Signed and Dated on Verso





# The SPACE Art Gallery

The SPACE Art Gallery, Philadelphia, established 2018, specializes in fine art photography and modern original jewelry and gifts. The physical area is impeccably designed, with a bespoke jigsaw hardwood floor, a viewing bench and natural lighting. In the curated collection of functional arts, the pieces are handmade by artisans across the country. The materials range from wood to glass and from silver to resin in a wide variety of price-points. The photography captures realistic and artistic natural and manmade images from small to large in a variety of developmental processes and sizes. Stop in during our open hours, request an appointment, or join us for a special event to shop, sit and enjoy the surroundings.

749 S. 8th Street, Philadelphia, PA 19147  
Wed - Fri 5-8pm, Sat 10-4, and by appointment  
215-279-7149  
info@thespacephiladelphia.com



The SPACE Art Gallery - Where Fine Art Photography Meets Modern Original Jewelry



The SPACE Art Gallery - *Dim Sum: Little Bits of Art* Exhibition



The SPACE Art Gallery  
www.thespacephiladelphia.com